



## Notice of road closure and traffic management on B4113 Stoneleigh Road

October 2020 | [www.hs2.org.uk](http://www.hs2.org.uk)

High Speed Two (HS2) is the new high speed railway for Britain. Click here to enter text. Balfour Beatty Vinci (BBV) is working in partnership with HS2 Ltd to build the new high speed railway in your area.

### Work we will be doing

We will be carrying out trial hole works on the B4113 Stoneleigh Road near to the entrance of Stoneleigh Park, so that we can understand the ground conditions beneath the surface. For these works to be carried out safely, BBV will put in place a traffic management plan and we will create an additional 1.2m safety zone in addition to the current road width to meet highways regulations.

The traffic management plan is divided into two parts:

- The first part of the traffic management plans calls for an off-peak daytime closure of the B4113 Stoneleigh Road to all traffic and pedestrians for five days from Monday 9 November to 13 November 2020 between 09:30 and 15:30 (**Please see map overleaf**).
- The second part of the traffic management plan will be the installation of off-peak temporary traffic lights between Stoneleigh Park/Stareton Road and Stare Bridge (Bridge over River Avon) from Monday 16 to Friday 27 November, between 09:30 and 15:30 excluding weekends. (**Please see map overleaf**).

### Information about HS2 construction works during the coronavirus (COVID-19) pandemic:

We are continually reviewing the works on our construction sites in line with Government and Public Health England (PHE) advice on dealing with COVID-19. The Government's current COVID-19 strategy makes clear that construction activity can continue so long as it complies with this guidance. The health and safety of our workforce and the communities we affect is our key priority. Please be assured that those sites that are currently still working are doing so because they can operate within PHE and construction industry guidelines.

**If you have a question about HS2 or our works, please contact our HS2 Helpdesk team on 08081 434 434 or email [hs2enquiries@hs2.org.uk](mailto:hs2enquiries@hs2.org.uk)**

### Duration of works

#### Stoneleigh Road closure

Monday 9 November to Friday 13 November between 9.30am and 3.30pm subject to site and weather conditions.

#### Temporary traffic lights

Monday 16 November to Thursday 27 November from 9.30am to 3.30pm excluding weekends.

#### Our working hours

We might be on site for up to one hour before or after these times, to set up and take down equipment.

#### What to expect

Potential traffic delays. Some noise from machinery

#### What we will do

Inform you in advance of any changes to the dates shown. Keep all sites safe and secure.

Keep you up to date via [www.hs2inwarwickshire.co.uk](http://www.hs2inwarwickshire.co.uk)

# Notice of road closure and traffic management on B4113 Stoneleigh Road

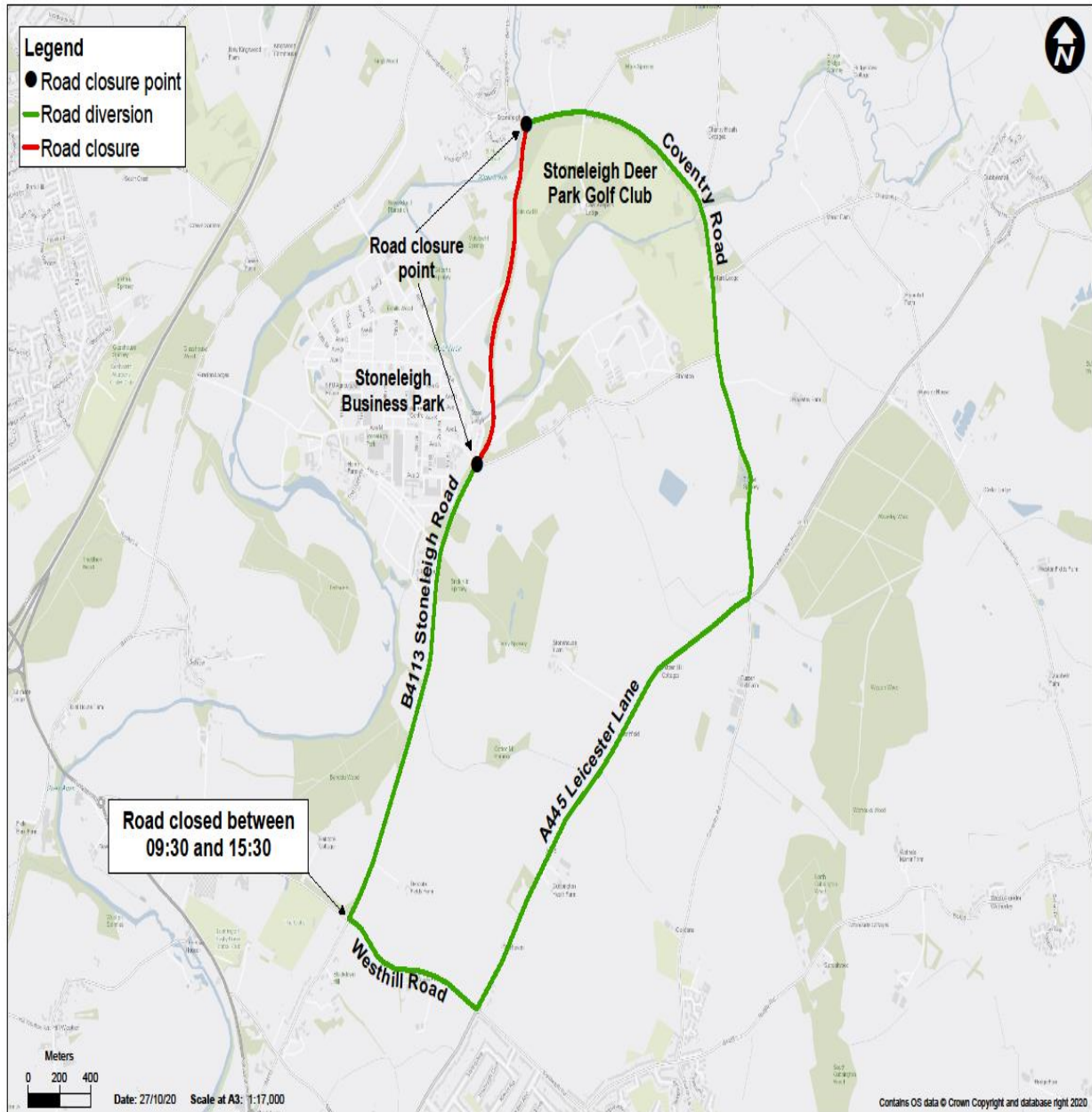
Notification



[www.hs2.org.uk](http://www.hs2.org.uk)

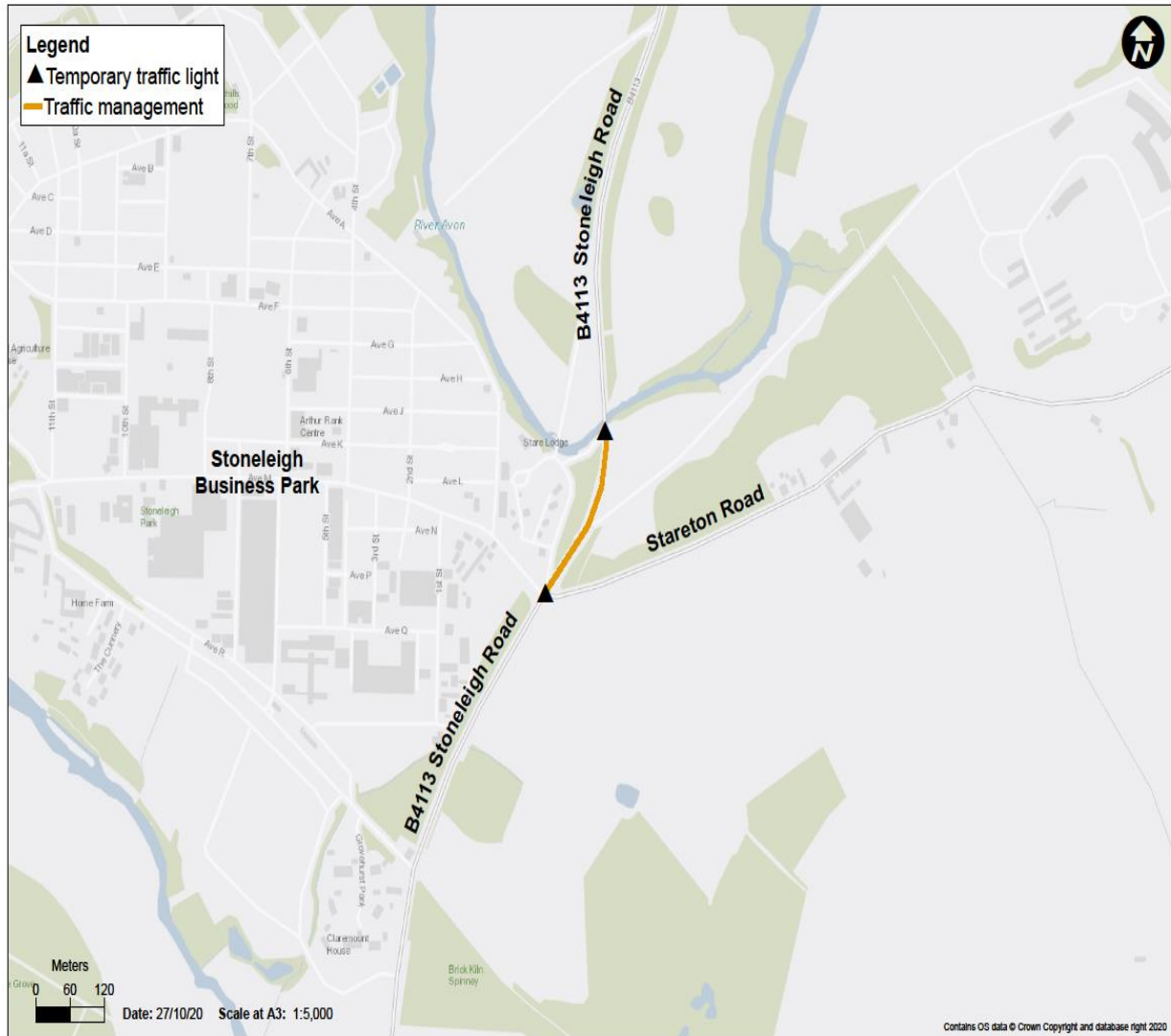
## Phase one - Stoneleigh Road closure

Please note that during the day time closure between Monday 9 November to 13 November 2020 between 09:30 and 15:30 09.30 am and 3.30pm no traffic including cycles will be able travel through the works, access will still be open to Stoneleigh Business Park.



Contact our HS2 Helpdesk team on **08081 434 434**

## Phase two - temporary traffic lights



### Stoneleigh and Ashow traffic management for LM's enabling works

HS2's early works contractor for your area, the Laing O'Rourke and Murphy (LM) joint venture, is also at work on local roads to prepare for BBV's main works. LM's upcoming work includes temporary traffic lights on B4113 Stoneleigh Road and Stareton Lane outside Stoneleigh Park's main entrance, and traffic lights on B4115 near Crewe Lane, for site preparation.

In the lead-up to the end of this year, LM will use temporary lane closures and short-term road closures to finish our site preparations. LM and BBV collaborate to plan traffic management in ways that reduce impacts on local communities, including sharing traffic management and working on roads at the same time.

More information on traffic management planned for December and January will be available at [hs2inwarwickshire.co.uk](https://hs2inwarwickshire.co.uk) on the 'Works in your area' page in coming weeks.

# Keeping you informed

We are committed to keeping you informed about work on HS2. This includes ensuring you know what to expect and when to expect it, as well as how we can help.

## Residents' Charter and Commissioner

The Residents' Charter is our promise to communicate as clearly as we possibly can with people who live along or near the HS2 route.

[www.gov.uk/government/publications/hs2-residents-charter](http://www.gov.uk/government/publications/hs2-residents-charter)

We also have an independent Residents' Commissioner whose job is to make sure we keep to the promises we make in the Charter and to keep it under constant review. Find reports at:

[www.gov.uk/government/collections/hs2-ltd-residents-commissioner](http://www.gov.uk/government/collections/hs2-ltd-residents-commissioner)

You can contact the Commissioner at: [residentscommissioner@hs2.org.uk](mailto:residentscommissioner@hs2.org.uk)

## Construction Commissioner

The Construction Commissioner's role is to mediate and monitor the way in which HS2 Ltd manages and responds to construction complaints. You can contact the Construction Commissioner by emailing: [complaints@hs2-cc.org.uk](mailto:complaints@hs2-cc.org.uk)

## Property and compensation

You can find out all about HS2 and properties along the line of route by visiting:

[www.gov.uk/government/collections/hs2-property](http://www.gov.uk/government/collections/hs2-property)

Find out if you're eligible for compensation at:

[www.gov.uk/claim-compensation-if-affected-by-hs2](http://www.gov.uk/claim-compensation-if-affected-by-hs2)

## Holding us to account

If you are unhappy for any reason you can make a complaint by contacting our HS2 Helpdesk team. For more details on our complaints process, please visit our website:

[www.hs2.org.uk/how-to-complain](http://www.hs2.org.uk/how-to-complain)

## Contact Us

Contact our HS2 Helpdesk team all day, every day of the year on:

 Freephone **08081 434 434**

 Minicom **08081 456 472**

 Email **[hs2enquiries@hs2.org.uk](mailto:hs2enquiries@hs2.org.uk)**

Write to:

**FREEPOST**

**HS2 Community Engagement**

Website **[www.hs2.org.uk](http://www.hs2.org.uk)**

To keep up to date with what is happening in your local area, visit: **[www.hs2inyourarea.co.uk](http://www.hs2inyourarea.co.uk)**

**Please contact us if you'd like a free copy of this document in large print, Braille, audio or easy read. You can also contact us for help and information in a different language.**

HS2 Ltd is committed to protecting personal information. If you wish to know more about how we use your personal information please see our Privacy Notice <https://www.gov.uk/government/publications/high-speed-two-ltd-privacy-notice>

## Reference number: Requested

High Speed Two (HS2) Limited, registered in England and Wales.  
Registered office: Two Snowhill, Snow Hill Queensway, Birmingham B4 6GA.  
Company registration number: 06791686. VAT registration number: 888 8512 56.