

# **STONELEIGH & ASHOW**

## **NEWS**



**OCTOBER 2022**



# “The Heart of Stoneleigh Defibrillator”

In the phone box on The Green

**Coordinator**

David Ellwood 07785 284482

Text if no reply

## **Trained Volunteers**

John Churchley	07885 496795
Laura Elliot	07738 222969
David Ellwood	07785 284482
Richard Hancox	07596 276829
Ian Huston	07974 237331
Sharron McEldowney	07760 101775
Claire Neale	07557 675842
Lisa Reay	07716 416320
Martin Smith	07958 955629
Mary Taylor	07890 535506

**Remember: Always ring 999 first!**

**There is also a defibrillator at Stoneleigh Village Hall**

## Stoneleigh Church Grounds Working Party.

After a year of regular mowing by our team of volunteers, then drought, the churchyard is looking fairly well maintained. Help is now needed please from all families & residents of Stoneleigh and beyond on Saturday 1st October, starting at 9.15 am until circa 12.30pm. At the end of the growing season, we try to edge the paths, cut back overgrowth of brambles & ivy, trees and bushes, weed and trim planted areas, and clear all cuttings and fallen timber to the bonfire site. All this is extra to the weekly mowing. Many couples have married, had children christened, and family buried in our lovely churchyard; others just enjoy the peace and tranquillity whilst passing through. In the past some families with supervised children have been able to help, so you are welcome, {but please note sharp tools will be on site}. If you are able to bring, and prefer to use, your own tools; secateurs, saw, fork, spade please do so.

Light refreshments will be available, so if you can come, a phone call to myself on: 07855 400 633, or message to the Church Office on: 024 7641 5506 before 30th September would help with the catering, and deal with any queries you may have.

*Thanks.  
Clive Watson*



## Stoneleigh Community Orchard CIC update

The harvesting of apples is generally a “Herculean labour” and so the lighter moments take on some importance in lifting the morale of the team. It was during the harvesting of a couple of our larger trees known as “Morgan Sweet” that one such occasion occurred. After picking the low hanging fruit and knocking apples from a particularly huge tree using tamping poles, some ground sheets had been stretched out to cover the ground beneath the tree with a plan for me to scale its heights then shake the tree so as to bring down the remaining “out-of-reach” apples. John Churchley a fellow member of the orchard group would then pick up apples off the floor, a task that always carries the chance of being inadvertently struck by one of the falling apples and sure enough one such faller almost parted his hair. On descending from my perch using a ladder, an amusing dialogue commenced, surrounding the physics of what had just happened with one eye cast back to our respective school physics classes and with particular reference to the works of Sir Isaac Newton! So it was that trawling through our collective memories we both undertook some calculations to work out the velocity of the apple on striking John’s head as well as the force! For this we decided that if the falling apple took 1.5 seconds to strike John’s head from rest and we assumed the apple had a weight of 0.25 Kilograms and gravitational acceleration approximated to 10 metres per second, then the velocity could be arrived at from the first equation of motion ( $v = u + at$ ) then  $v = 0 + 10 \times 1.5 = 15$  meters/second. Furthermore, the impact force could be calculated by applying Newton’s second law of motion in which force = mass x acceleration arrives at an impact force of some  $0.25 \times 10 = 2.5$  Newtons!

The reader may notice that a metaphor exists here that may encourage those younger members of our community who are of

school age to join us in apple picking and at the same time get an introduction and educational grounding in such things as Newtonian physics! It also serves as a reminder that the educational experience exists in all aspect of life.

If folk want to participate in picking, then please get in touch with me at the email address below or simply join me and other members of the team in the orchard.

Orchard Friends' subscriptions and yearly renewals cost £10 and can be made to Pete Freeman as Chairman or to Richard Hancox as Treasurer. Cheques should be made payable to Stoneleigh Village Community Orchard, however why not become a long term Friend and set up a direct debit.

Pete Freeman (Chairman), 5 Church Lane, Stoneleigh  
[Petefreeman773@gmail.com](mailto:Petefreeman773@gmail.com)

Richard Hancox (Treasurer) Hancox,  
[Richard.Hancox@highwaysengland.co.uk](mailto:Richard.Hancox@highwaysengland.co.uk)



## June Burr 20<sup>th</sup> June 1936 – 4<sup>th</sup> July 2022

Although June had been experiencing some health problems, it was a great shock to all of us when she died suddenly in hospital earlier this summer. June was involved with many organisations and had many interests, including The National Trust, Gardening Club and Art groups, and was passionate about animals and all things to do with nature, not least her cats, Oscar and the late Tom. She had a busy social life with her friends, loving to be out and about, and she and John enjoyed going out for lunch. When June had on her best outfits for the Sunday service, we knew they were off somewhere afterwards!

June loved Stoneleigh and St Mary's Church was practically her second home. Anyone connected with the church will know that her commitment, perseverance and determination made her a formidable and extremely successful Senior Church Warden and Diocesan Representative, and the worship and fellowship she enjoyed in the church meant everything to her.

At the same time, June was great company with a terrific sense of humour and warm heart for all living things. Members of the PCC remember her spirited defence of the churchyard moles, when the odds were heavily stacked against them! And it was never a good idea to try calling June at 8pm, as that was her time for feeding Brer Fox, her beloved garden visitor.



June's family were extremely important to her, those in the Midlands, Norway and Australia, and she would have been so delighted to experience the love that they expressed for her at her funeral in August.

As June's fellow Church Warden, Rev. Gordon Gatward, wrote, "Her passing leaves a great gap in our life as a congregation and as we pray for those who will miss her most, her friends and family, so too we thank and praise God for all that she has meant to each one of us."

And thank you, dear June.

*Maggie Moorhouse*

## Jonathan Cousins

It is with great sadness that we advise you of the sudden and unexpected death of Jonathan at the very early age of 52.

Jonathan and his family have worshipped at Stoneleigh Church for many years and have all been very involved in the life of the church.

He and his wife Anna, together with their daughters Sophie and Lucy, were often seen welcoming people to services as sides-people, and Jonathan, as well as being a server at the communion table, was a regular reader at the lectern. However his major contribution was as our treasurer, a role he has filled for several years with great efficiency.

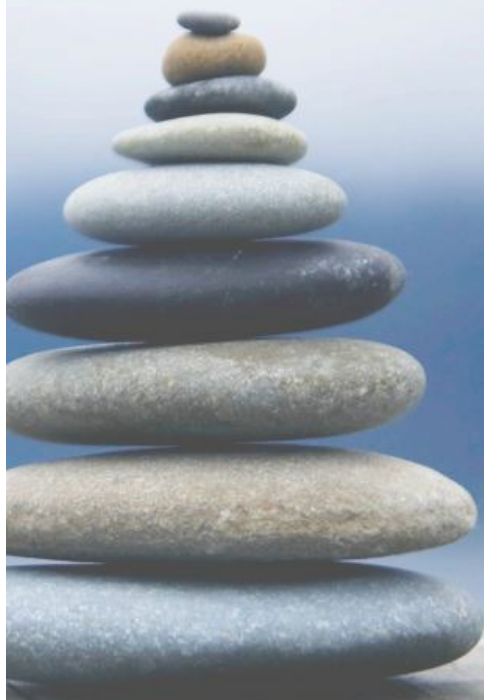
An accountant by profession, he gave his time freely to the preparation and keeping of the accounts, as well as offering invaluable advice to the other members of the PCC, and often pointing us in the right direction where we might otherwise have gone astray. As has often been said, if you want a job done well, give it to a busy man, and Jonathan was certainly that, offering his services to many clubs and associations.

His main passion, apart from his family, was his love of cricket, and he was a valued member of Kenilworth Cricket Club. He had taken to umpiring and was fast climbing the ladder and was officiating at major matches and there is no doubt that he would have gone on to a much higher level in the future. It was whilst he was participating in a social match to mark the end of the season at the ground on the road to Leek Wootton that he collapsed. For him it was a setting he would have chosen, but it was far too soon.

He will be deeply missed in so many areas, including Coventry City Football Club, where he was a keen supporter, but we shall miss his help and advice, as well as his personality, enormously at Stoneleigh Church. Our sincere condolences go to Anna and the girls, to his mother, and to Wendy, Anna's mother. They will all be very much in our hearts and in our prayers.

*Richard Ashley*

# Do you know a someone that needs....



- A Mental Capacity Assessment
- A Testamentary Capacity Assessment
- A Certificate Provider
- An Independent Welfare Review
- Advocacy and Support
- Funeral Plans

for further information

**Appoint Us**  
SERVICES (MIDLANDS) CIC

024 7699 8414

[www.appointuservices.co.uk](http://www.appointuservices.co.uk)







**Appoint Us**  
SERVICES (MIDLANDS) CIC



For further information  
024 7699 8414

[www.appointuservices.co.uk](http://www.appointuservices.co.uk)

find us on facebook - Appoint Us Services

## University of Warwick update

The University has seen some exciting developments in the last few years, including the renovation of Warwick Arts Centre (WAC). When work began in 2017, the biggest refurbishment in our 47-year history was underway. The space has seen a big improvement in accessibility, an increased number of cinema facilities and the addition of just a bit more sparkle! We've been back open for a while but the official re-opening is this October – it's an exciting time to get involved.



The WAC Weekender events are taking place 6-9 October with a host of (free!) taster events such as face painting, workshops, and an interactive sculpture stack for children to go wild (with just the right amount of supervision, of course!).

But it's not just for the children; there are lots of exhibits perfect for adults too. Check out our website to find something to fill your weekend: [www.warwickartscentre.co.uk](http://www.warwickartscentre.co.uk)

For those of you with children or grandchildren, regular WAC events take place each week – think musical picnics, family creative workshops (Sundays), and even family singing sessions. There are also Family Film screenings on Saturdays to keep the youngest entertained. And if you want some time for yourself, why not visit the free art exhibition in the Mead Gallery, open Tuesday-Sunday every week. While you're here, please feel free to explore the University campus and enjoy the cafes and restaurants. We look forward to bumping into you soon.

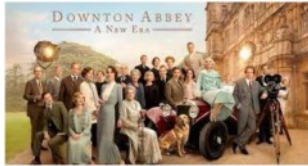
You can reach me by email on [community@warwick.ac.uk](mailto:community@warwick.ac.uk) if you have any questions.

*Ben Hayday*  
*University of Warwick*

## Film Night

For our next film night, we will be showing:

### Downton Abbey – A New Era



Downton Abbey: A New Era is a 2022 historical drama film and the sequel to the 2019 film Downton Abbey; written by Julian Fellowes.

The Crawley family goes on a journey to the South of France to uncover the mystery of the dowager countess' newly inherited villa.

**Friday November 18<sup>th</sup> 2022 in  
Stoneleigh Village Hall  
Meet 6.45pm for a  
7pm showing**

Please can you bring a cup and plate.

Coffee, tea and pastries will still be served in the interval.

Entry price £4.00, to cover refreshments and room hire.

To reserve a place and a pastry call Jane on 01926 858315 by

Wednesday November 16<sup>th</sup>.

## HS2 Update

Many meetings have once again been held, with many more to come. Planning proposals are being regularly updated. Examples are the B4113 Park main gate overpass and roundabout; the Stoneleigh Road roundabout entrance to the A46 compound and the B4115 road bridge and realignment. It is to be hoped that with continued pressure there will be mitigation of further unnecessary and environmental damage to our area.

*Brief resume by Sheila Woolf on behalf of the Stoneleigh Action Group  
(Against HS2)*

### ***Betty and Ted Hind***

#### ***70th Wedding Anniversary***

Betty and Ted Hind would like to express their sincere thanks to all the villagers who were kind enough to send cards and flowers on the occasion of their 70th Wedding Anniversary.

These made a very happy day even happier



At the September meeting we had a demonstration of glasswork. Wendy Stafford works with stained glass to make some delightful objects. She showed photographs of her work and invited us to visit her garden where she displays her work.

We had a visit to Compton Verney, a place that many of us had visited often. However, this time, as a group, we were given a tour through the galleries. Having a lot of the art works explained and their provenance, made it very interesting. We had coffee on arrival and then lunch after the tour. These were served in a private dining area, again making it quite special.

Another lunch out was at Kings Hill nursery with a look around the plants that they have and the ones that are being prepared for Christmas

The speaker for the October meeting is Lynne Stubbings. Lynne is a member of Wishart WI and has been the National Chair for the past three years. She is going to speak about her experiences during her time in office. The meeting is on October 3<sup>rd</sup> at 1:30 to start at 2pm. Please come and join us as I'm sure that it will be very interesting.

*Liz Sykes*

**Your advertisement could be here!**

A quarter page advertisement (like this one!) is just **£25 per year!**

A half-page is £50 per year. A whole A5 page is £100 per year

There are 10 copies per year so this is amazing value.

Advertisements are accepted at the editor's discretion, subject to the S&A News policy

Email [w.e.crofts@warwick.ac.uk](mailto:w.e.crofts@warwick.ac.uk)

## STONELEIGH LADIES CHOIR

It does seem rather strange to be planning Christmas music in September but needs must as the choir has already agreed to three performances in December.

Between now and then, the choir is pleased to announce the return of the popular Quiz Night which will take place on Friday 11 November at the village hall. Tickets are available from our Secretary whose contact details are below.

As previously reported, £600 has already been donated to the Coventry and Warwickshire Food Bank. The choir is continuing their support with donations of food to be collected at the village hall during one of our meetings. If you can donate a tin or a packet of food ie cereal, pasta, rice, packet or tinned soup, tinned meat, beans or biscuits we will be leaving a box in the entrance of the village hall between 1pm and 3pm on Thursday, 13 October. You might even enjoy listening to the singing.

The choir is happy to welcome returning members together with new faces as we begin to learn music which is new to us all. Interested? If you would like further information, please contact our Secretary , Sharron at [sharronmced@gmail.com](mailto:sharronmced@gmail.com)

*Pat Wightman*



## Stoneleigh Male Voice Choir

The choir are busy rehearsing for our concert in Aberdare on October 8th, where we will be joining two Welsh choirs, Con Voce and Cwmdare Voices at St Elfan's Church. The Choir is delighted to be taking part in this event.

This year the choir has raised over £4000 for various causes and since the choir's formation in 1989 we have raised over £160,000 for worthwhile causes, which is a wonderful achievement.

If anyone is interested in joining the choir, please contact Philip Jones on either 01926 853511 , by e-mail at:[kathryngjones@hotmail.co.uk](mailto:kathryngjones@hotmail.co.uk) or come along to the village hall on Wednesdays at 7.30.

*Philip Jones*

**Stoneleigh Church**  
**1st October at 2pm**  
**Afternoon Tea**

Stoneleigh villagers and the congregation of Stoneleigh Church have regularly contributed towards the Teams4U shoebox appeal.

Please come for tea and cake but also to learn more about the Charity; what goes in the boxes and where they go. Attending the tea will be representatives from the Charity, shoebox packers and Rev. Petrica Bistran, our Priest in Charge, who was a recipient of a shoebox as a child in Romania.

T4U

real people making  
a real difference



There is no charge for the tea  
but donations for Teams4U would be welcome!

## PARISH COUNCIL NOTES

### Meetings

The next meeting will be on **Thursday 13<sup>th</sup> October 2022**, to be held at **Ashow Village Club** at 7pm.

To view the full details of this, and other meetings, including upcoming planning applications, please visit the Parish Council website at: [www.stoneleighshowparishcouncil.co.uk](http://www.stoneleighshowparishcouncil.co.uk).

Our September meeting ended early, due to the sad news of the death of Queen Elizabeth II. The Parish Council extend their condolences to His Majesty the King, and the Royal family.

A reminder that BBV (contractors for HS2) will be attending two of our Parish Council meetings on Thursday 10<sup>th</sup> November 2022 and Thursday 9<sup>th</sup> March 2023, both to be held at Stoneleigh Village Hall. This will be a great opportunity for residents to receive updates and raise any issues. If you are unable to attend the meeting but would like a matter raised or question answered, please contact the clerk on the email address below.

The Police and Crime Commissioner, Philip Seccombe, will be attending the Parish Council meeting on 8<sup>th</sup> December 2022, to discuss the ongoing concerns that residents have with recent and future events at Stoneleigh Park. Please send any concerns or questions to the clerk on the address below, if you would like them considered at the meeting.

The new Warwick District Council app is now live and can be downloaded to your smart phone from Google Play or the Apple store. You can use the app to find out what you can put in which bin, get bin collection reminders or report a missed bin collection.



Thank you to all those that have volunteered to be part of the Stoneleigh Community Speed Watch campaign. We now have six volunteers, but are still happy to welcome more! If you are interested in volunteering, please contact the clerk (at the address below) or PCSO Ed King on Edward.King@warwickshire.police.uk.

*Becky Maoudis, Parish Clerk*  
[stoneleighshowparishcouncil@gmail.com](mailto:stoneleighshowparishcouncil@gmail.com)  
PO Box 6890, Coventry, CV6 9QU

## **STONELEIGH VILLAGE CLUB UPDATE**

Following the AGM on Sunday 24<sup>th</sup> July, a number of new members were appointed to the Club Committee. We would like to place on record our gratitude to the outgoing committee members for all of their hard work in recent years and, in particular, for steering us through the challenges presented by the pandemic. It is a relief to still have a fully operational and financially healthy club! The committee has met on a couple of occasions and will shortly be making a number of cosmetic changes to the club, some of which have already taken place.

It is our aspiration to expand the club membership and make the club an inclusive space for all. We want to engage with the wider community as best we can and we invite both the current and prospective membership to provide feedback on what you would like to see from the club, from the current drinks offering, to opening times to events. In particular, we would be interested to hear from anyone who might like to start up regular events, such as the book club which ran prior to the pandemic. For anyone who follows the Facebook page, you will notice that there is a post calling for feedback. Alternatively, you can send any feedback to [stoneleigh.villageclub@gmail.com](mailto:stoneleigh.villageclub@gmail.com) or drop a note into the village club.

### **Opening times**

We have taken on feedback from the club membership and have revised the opening times as follows

Monday to Thursday – 19:00 to 23:00

Friday – 16:00 to 23:00

Saturday – 15:00 to 23:00

Sunday – 15:00 to 20:00

We will keep these revised times under review. It is possible that these times could be extended for organised / private events with sufficient notice.

### **Upcoming events**

24 September – Quiz (to register a team please fill in the form in the club)

29 October – Halloween party

18 November – Children in Need event

17 December – Children’s Christmas party

18 December – post Carol Service drinks and sing a long

31 December – New Year’s Eve Party

Please keep an eye out on the notice board outside the club for further details.

The committee looks forward to working with the membership and community to ensure the smooth running and prosperity of the club for the current and future generations. If you have anything that you would like to discuss with the committee then do contact us at

[stoneleigh.villageclub@gmail.com](mailto:stoneleigh.villageclub@gmail.com)

## From the Rectory – Petrica Bistran

The question that Christians want to ask about any tragedy or setback is, “how can this become a source of blessing to me?” This is a good question if we consider the possibility that under God every “crucifixion” can become a new resurrection. How can the sad death of a late Queen be a source of blessing to us?

In the period of national mourning, following the passing of Her Majesty the Queen Elizabeth II, we witnessed a gentler, kinder, less adversarial mood. There has been a coming together and a greater sense of national unity; there has been a respect for the values of service and compassion that were so splendidly exemplified by the late Queen.

If the Queen’s death is to become a source of blessing it will be through a continuation of this different mood that has run through our national life, rather than simply reverting to our old adversarial ways in the days and weeks following her funeral.

After the bombing of Coventry in 1940, the Provost, broadcasting to the Empire on Christmas Day, called for people to make “kinder, gentler more Christ-like kind of world” after the tragedy of the Second World War, with all its bitterness and hostility.

Can we use the death of our late Queen as an opportunity to build a gentler, kinder world, a world in which we listen to each other with greater respect, even to people we disagree with? That seems to be what God is calling us to do. That is how the sad death of the Queen can be a source of blessing to the nation.

The Queen, leaving behind a remarkable legacy of duty and service, has now entered the Heavenly Kingdom of God which He wants to share with all of us. But we have to trust that our lives, whether short or long, can also bear fruit far beyond the boundaries of our chronologies. We must trust deeply that what we leave behind will bring joy, peace, and life to those who will remember us.

**NGB Electrical**



**Nathan Biddle** *Electrician*

**APPROVED  
CONTRACTOR**

- **Domestic Installations**
- **Testing & Inspecting**
- **Rewires & Alterations**

**P: 07525285819**

**E: [NGB.electrical@hotmail.com](mailto:NGB.electrical@hotmail.com)**

This month's edition of the **Stoneleigh & Ashow News** was compiled by Sheila Woolf, who would like to thank all contributors.

This issue can be viewed online at [www.stoneleighvillage.org.uk](http://www.stoneleighvillage.org.uk) and on the Stoneleigh Village Facebook page.

The **November** issue will be compiled by

Sarah Ballinger

All copy should be sent to the editor's email address

[sarahjballinger@gmail.com](mailto:sarahjballinger@gmail.com)

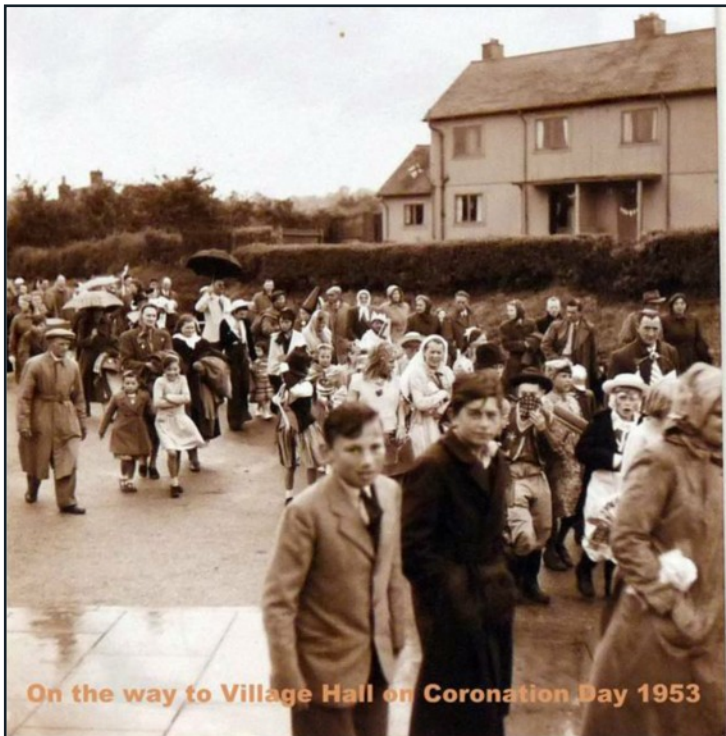
**Copy deadline 18<sup>th</sup> October 2022**

## Stoneleigh History Society

At the time of writing we are looking forward to hearing a late September talk given by Tony Merrygold of the Jaguar Daimler Heritage Trust at Gaydon. Our next meeting, on October 25, will be David Freke speaking on “Scratching the Surface - medieval graffiti in Warwickshire churches.”

Our exhibition in the Leigh Chapel remains until the end of the year; it has been especially poignant in recent days to look through all your old photographs and recollections of the village during the seventy years of Queen Elizabeth’s reign. Do go along and reminisce - you are welcome to add your own memories in the book alongside the display.

*Sheila Woolf*





# Let us buzz on in!

## HoneyBee HomeCare

Care Comes Naturally

HoneyBee HomeCare, founded by a resident of Stoneleigh; is a care company that puts emphasis on the word “care”.

From our clients, to their family, to our staff: we aim to look after everyone involved with our company at any opportunity we can get.

To ensure that our clients get the best care possible, we start by making sure we are the best care company to work for by treating our staff like family and paying them well!

We give our staff thorough training so they are confident in every aspect of their role in our clients’ lives.

Our carers also take pride in getting to know our clients’ families and friends as their social life plays a big part in maintaining their care & well-being.

If you’re interested or have any further questions, don’t hesitate to get in touch!

tel: 01926 428509

E-mail:  
[Jess@honeybeehc.co.uk](mailto:Jess@honeybeehc.co.uk)

web:  
[www.honeybeehc.co.uk](http://www.honeybeehc.co.uk)





Gracious God, we give thanks  
for the life of your servant Queen Elizabeth,  
for her faith and her determination to bring  
Blessed our children as we mourn her death,  
and pray her example continue to inspire us,  
through Jesus Christ our Lord. Amen.



**THE UNITED BENEFICE OF**

**THE ASSUMPTION OF OUR LADY,  
ASHOW**

**and**

**ST MARY THE VIRGIN, STONELEIGH**



***SERVICES FOR OCTOBER 2022***

Sunday 2 <sup>nd</sup>	10.00 am Harvest Festival Celebration Service at Ashow 11.00 am Holy Communion Service at Stoneleigh
Sunday 9 <sup>th</sup>	9.30 am Holy Communion Service at Ashow 11.00 am Morning Praise Service at Stoneleigh
Sunday 16 <sup>th</sup>	9.30 am Celtic Service at Ashow 11.00 am Celtic Holy Communion Service at Stoneleigh
Sunday 23 <sup>d</sup>	9.30 am Village Service at Ashow 11.00 am Holy Communion Service at Stoneleigh
Sunday 30 <sup>th</sup>	9.30 am Holy Communion Service at Ashow 11.00 am Holy Communion Service at Stoneleigh

***From the Registers***

***Funerals***

Friday 19<sup>th</sup> August 2022 – Sylvia Aston – Interment at Stoneleigh

Thursday 7<sup>th</sup> September 2022 – June Burr – Interment at Stoneleigh

**Contacts:**

***Churchwardens:***

***Priest in Charge:*** Reverend Petrica Bistran 07572193260

email: [revpbistran@gmail.com](mailto:revpbistran@gmail.com)

**Ashow:** Kate Jones 01926 853511 and Anne Gregory 01926 717084

Deputy Warden: Peter Shrimpton 01926 859404

**Stoneleigh:** Gordon Gatward 07776 211276

Deputy Warden: Richard Ashley 07708 097187

Or please contact the Parish Administrator,

Jackie Cubitt, 02476 415506 email: [admin@stoneleighchurch.co.uk](mailto:admin@stoneleighchurch.co.uk)

*Office Hours Wednesday 9.00 am to 12.00, Thursdays 9.00 am to 1.00 pm*

**Website:** [www.achurchnearyou.com/church/12964](http://www.achurchnearyou.com/church/12964) for Stoneleigh

[www.achurchnearyou.com/church/12954](http://www.achurchnearyou.com/church/12954) for Ashow