

# **Stoneleigh & Ashow News**



**February 2023**

# “The Heart of Stoneleigh Defibrillator”



**In the phone box on The Green**

**Coordinator**

David Ellwood 07785 284482

Text if no reply.

There is also a defibrillator outside the  
Village Hall

## Trained Volunteers

John Churchley 07885 496795

Laura Elliot 07738 222969

David Ellwood 07785 284482

Richard Hancox 07596 276829

Ian Huston 07974 237331

Sharron McEldowney 07760 101775

Claire Neale 07557 675842

Lisa Reay 07716 416320

Martin Smith 07958 955629

Mary Taylor 07890 535506

## From the Rectory

Thank God, it's February, the last month of winter! Not that I mind winter – I love all seasons – but they say, “beware of January!” It can be not just a very “dry,” for obvious reasons, but quite a merciless month. By all accounts, January harbours the most depressing day of the year, now officially recognised as Blue Monday. It's that time of year when the weather is miserable, we're all cold, probably broke after the seasonal holidays, and riddled with guilt that our new year's resolutions to get fit, drink less alcohol, and be a better human being have fallen by the wayside. Quite depressing, indeed!

There are many tips out there on how to beat Blue Monday, but that's not what I want to write about. What I like about the Celtic calendar, which like ours starts in the depths of winter, is that it had a strong emphasis on the idea of moving out of darkness into that creative light that brings life to us all once again. And for the Christian Celts, the light of life that brings joy was already hidden in the surrounding darkness. All you had to do was to look for those moments of light. Hence, the idea of epiphany.

I had a moment of epiphany recently and it was sweet. You know that verse in the Bible that says, “the joy of the Lord is your strength” (Nehemiah 8:10) – it's so true! Back in January, I was struggling really badly with the flu, and I was very worried about an assignment I had to complete for my art course and afraid I was going to fail. But one day, after a bit of prayer, “the joy of the Lord” hit me – an overwhelming sense of joy that's difficult to fully describe! That wonderful joy didn't heal me instantly, but it gave me the strength that I needed to do my work despite my physical weakness. The painting below is part of that experience, but more about that another time.



If there's one new year's resolution that I've been able to keep so far, and hope to keep all year long, is to always seek that mystical joy of God that gives me the strength that I need to face whatever “Blue Monday” the year may bring my way. Keep looking for joy, I say to myself and you, and I promise, you will find it when you least expect it – that's actually not just my promise, but a promise from God!

Petrica Bistran

## Is a Paper Copy of S&A News Important to You?

You will have noticed that, over the past year, Stoneleigh and Ashow News has returned to distributing a paper copy to residents. This was a trial period for us to see if a significant number of residents felt that receipt of a paper copy was important to them.

We asked residents to show their support for a delivered, paper copy by making a modest voluntary contribution towards the cost of running S&A News. During 2022, we received a contribution towards costs from **23 residents**. This is set against the printing and distribution of **300 copies per month** to both villages. Received contributions were about £100 short of printing/stationery costs over the year.

Note that an online version of the newsletter is still published each month on the village website at:

<http://www.stoneleighvillage.org.uk/>

If a delivered paper copy of S&A News is important to you, please consider making a modest annual donation!

A regular BACS transfer is the easiest for me to deal with. If you are willing to do this, and haven't already set up a BACS facility, please email me at [bill.crofts@btinternet.com](mailto:bill.crofts@btinternet.com) and I will send bank details.

However, if you prefer to send a cheque, please make the cheque to **S&A News** and post it to:

Dr Bill Crofts  
North Lodge  
Coventry Road  
Stoneleigh  
CV8 3DT

# **Paper or on-line? Have your say!**

By Stoneleigh and Ashow News Committee

In September 2022 we were pleased to fulfil our 2022 AGM plans to return to a print version of the *News*. At our recent January 2023 AGM, we reviewed this and would like to get your views.

Do you have a preference for on-line, print or don't mind?  
Use the QR code below to let us know your thoughts.



If you haven't used a QR code before it's easy! Just point the camera on your phone on the QR code and a link address to a website will appear at the bottom of the screen. Touch the link on your phone and it will take you to the survey.

Don't delay, click today! This one-question survey will close on the 13<sup>th</sup> of February.

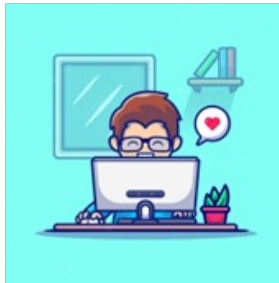
# Editor Wanted!

Are you interested in contributing to your local community?

Would you like to join the editorial team of the  
*Stoneleigh & Ashow News?*

We are in need of another team member, to be responsible for putting together one of our monthly editions, (likely to be October 2023).

You will be joining an experienced and friendly team who will be happy to offer support. To find out more, please contact Sheila Woolf for a chat about what is involved – email [shewoolf@hotmail.co.uk](mailto:shewoolf@hotmail.co.uk) or contact her via Facebook Messenger.



## **NGB·Electrical**

**Nathan·Biddle·**  
*Electrician*

- Domestic·Installations**
- Testing·&·Inspecting**
- Rewires·&·Alterations**

**P:····07525285819**

**E:····[NGB.electrical@hotmail.com](mailto:NGB.electrical@hotmail.com)**





**A Fundraising Concert in aid of Ashow Church  
featuring  
Stoneleigh Male Voice Choir**



**Friday 24<sup>th</sup> March 2023 at 7pm.**

**Tickets £15 each to include a glass of wine and refreshments, available from Philip Jones – 01926 853511 or 07910 240453**

**Email: [kathryngjones@hotmail.co.uk](mailto:kathryngjones@hotmail.co.uk) or any member of Ashow PCC or SMVC**



## HS2 UPDATE

Diversions and traffic lights continue to hinder local traffic movements. The timetable for the A46 works keep changing.

At a very short briefing meeting by HS2 Ltd before Christmas, reference was made to various works planned this year. However, no timescale was mentioned and it is anticipated that delays to the A46 project will affect HS2 work, including access to the compound. As far as the latter is concerned, it seems that little progress has been made by HS2 Ltd and the contractors towards getting planning permission to enable access to happen. All very frustrating!

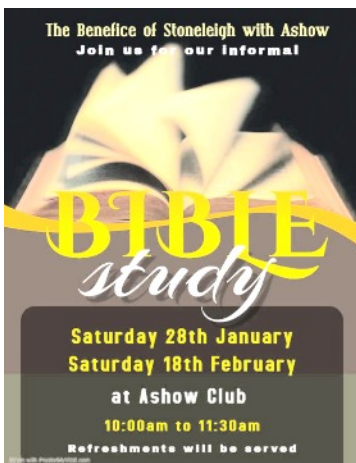
Towards the end of January, 3-way traffic lights are to be installed at the bottom of Crewe Lane while work is undertaken at the junction with the B4115.

Planned road works slightly further field, associated with various non-co-ordinated projects, mean that our residents are likely to be inconvenienced by the knock-on effects for the foreseeable future.

Happy 2023!!!

*Margaret Wallis*

*(on behalf of the Stoneleigh Action Group  
against HS2)*



Please join us for our informal Bible Study Group in January and February. We meet in a very friendly and relaxed environment to explore our faith and learn more about God and the Bible.

Hope you can join us!

Refreshments are provided.

Everyone is welcome!





# Let us buzz on in!

## HoneyBee HomeCare

Care Comes Naturally

HoneyBee HomeCare, founded by a resident of Stoneleigh; is a care company that puts emphasis on the word "care".

From our clients, to their family, to our staff: we aim to look after everyone involved with our company at any opportunity we can get.

To ensure that our clients get the best care possible, we start by making sure we are the best care company to work for by treating our staff like family and paying them well!

We give our staff thorough training so they are confident in every aspect of their role in our clients' lives.

Our carers also take pride in getting to know our clients' families and friends as their social life plays a big part in maintaining their care & well-being.

If you're interested or have any further questions, don't hesitate to get in touch!

tel: 01926 428509

E-mail:  
[Jess@honeybeehc.co.uk](mailto:Jess@honeybeehc.co.uk)

web:  
[www.honeybeehc.co.uk](http://www.honeybeehc.co.uk)



## Film Night

For our next film night, we will be showing:

### Mrs Harris Goes to Paris



In 1950s London, a widowed cleaning lady falls madly in love with a couture Dior dress, deciding she must have one of her own.

After working to raise the funds to pursue her dream, she embarks on an adventure to Paris that will change not only her own outlook - but the very future of the House of Dior.

Starring Lesley Manville as Mrs Harris.

**Friday March 3<sup>rd</sup> 2023 in  
Stoneleigh Village Hall  
Meet 6.45pm for a  
7pm showing**

Please can you bring a cup and plate.

Coffee, tea and pastries will still be served in the interval.

Entry price £4.00, to cover refreshments and room hire.

To reserve a place and a pastry call Jane on 01926 858315 by

Wednesday March 1<sup>st</sup> .

The December meeting was very enjoyable. We were entertained by the Ladies' Choir and subsequently we had afternoon tea.

Later in the month we went to the Stoneleigh Deer Park Golf Club for a Christmas lunch. Again, very good – company and food.

At the New Year's first meeting we had a speaker from the Soroptimists which was very interesting. She told us about the work that they do to help the women and girls around the world to achieve better lives. So much goes on without us knowing how these groups of people work so hard to help disadvantaged women. If you are interested please come and see what we do.

Later in January we'll have lunch at the Anchor at Leek Wootton. Something to look forward to.

On February 6<sup>th</sup> our friend Sheila Woolf is giving us a talk on 'Here come the girls', a history of American women who married into the British aristocracy in Warwickshire. Everyone is welcome.

Liz Sykes

---

*This month's cover:*

*Lighting the path to Ashow Church*

*Photograph - Jane Taylor*



*Stoneleigh Village Club*

*Est. 1856*

*[www.facebook.com/stoneleighvillageclub](https://www.facebook.com/stoneleighvillageclub)  
[stoneleigh.villageclub@gmail.com](mailto:stoneleigh.villageclub@gmail.com)*



## **Stoneleigh Village Club Update**

The Committee of Stoneleigh Village Club would like to wish everyone a very Happy New Year.

During the festive period the Village Club hosted several events. The Children's Christmas Party was enjoyed by all the children and we would like to thank all who made it such a success as well as those who contributed to making the Club looking the part with Christmas decorations. A warm welcome was extended to all who returned to the Club after the Carol Service. We would like to thank everyone who donated to the raffle which was drawn on this evening.

Christmas Eve, Christmas Day and Boxing Day proved busy. It was wonderful to see so many people. We were very grateful, once again, as we were all hugely entertained by the Mummers on Boxing Day.

New Years Eve was very well attended and we danced the night away, with all our friends, to a fabulous disco.

We hope that 2023 brings health and happiness to all that are reading this and as always, we welcome you to your Village Club.

The Committee

Please keep an eye on all notice boards for details  
of forthcoming events.

## Stoneleigh History Society

Our first meeting of the year revealed a variety of members' interests and research: our main presentation was given by Peter James, who has for many years investigated various aspects of Coventry's industrial past. This was followed by several "mini-presentations" illustrating all sorts of research activity in which our members have become involved. A fascinating evening, made better still by wine and nibbles postponed from our Christmas Social, which had been cancelled owing to illness.

We have a full and interesting programme for 2023 (see [www.stoneleighhistorysociety.org.uk](http://www.stoneleighhistorysociety.org.uk)) and we are always delighted to welcome new members.

We meet on the last Tuesday of the month at 7.30pm at the village hall. Why not come along as a guest, initially (cost £3) and see whether you would like to join us?

Our next meeting is on February 28<sup>th</sup>, when we welcome back well-known speaker David Fry, who will talk about "Coventry's Canal: A Hidden History in Plain Sight."

Sheila Woolf  
[shewoolf@hotmail.co.uk](mailto:shewoolf@hotmail.co.uk)



# STONELEIGH LADIES CHOIR



*And so begins our 10th Anniversary Year.....* Can it really be ten years since since Stoneleigh resident, Val Baker, mooted the idea of a ladies' choir? Val arranged for letters to be posted through all the letterboxes in the village and, at the first meeting, twelve people turned up. Word got out very quickly as twenty-four people arrived at the second meeting. Since then the choir has grown to forty-plus very enthusiastic members from Stoneleigh, Ashow, Kenilworth , Coventry and surrounding areas.

So to kick off this special year, a number of events have been arranged starting on 24 January with a Glitz and Glamour lunch at the Kenilworth Golf Club – a really good excuse to sparkle.

The hard work has already begun in preparation for the first of two concerts planned for the first half of the year. On 27<sup>th</sup> April the choir will present a concert to mark the 10th Anniversary and it is intended to invite all past members for join them in singing songs old and new. So many lovely friendships have developed within the choir that it is felt important to maintain these links.

The second concert in July will be to raise money for Crisis, our chosen charity to support this year.

On 15<sup>th</sup> March the ladies have arranged a trip to the Birmingham Hippodrome for a matinee performance of My Fair Lady.

So a busy year ahead.....

During its 10 year existence, the choir has only lost two of its members. Sadly, last month we heard that our lovely friend and valued member, Jane Dickenson had died. Jane joined the choir after moving to Kenilworth and no one will forget the beautiful solo she sang at the Queen's Platinum Jubilee.

Pat Wightman



This edition of Stoneleigh and Ashow News was compiled by Jane Taylor, who would like to thank all contributors. The online colour version can be viewed at the village website [www.stoneleighvillage.org.uk](http://www.stoneleighvillage.org.uk).

The March 2023 edition will be compiled by Sarah Ballinger

**[sarahjballinger@gmail.com](mailto:sarahjballinger@gmail.com)**

Copy deadline: 18<sup>th</sup> February 2023

Placing an advertisement in Stoneleigh & Ashow News  
Our page format size is A5. Rates **per annum (10 editions)** are:

<b>Full page</b> (13 x 19cm)	£100
<b>Half page</b> (13 x 9.5cm)	£50
<b>Quarter page</b> (portrait or landscape) (6.5 x 9.5cm or 13 x 5cm)	£25

Rates for advertising in a single edition are:

<b>Full page</b> (1 edition + £10 each extra edition)	£20
<b>Half page</b> (1 edition + £5 each extra edition)	£10
<b>Quarter page</b> (1 edition + £5 each extra edition)	£10

### How to create your advertisement

- Create an advertisement that conveys your message and matches your chosen size (see above). We accept the following formats: Word, pdf, jpeg, png. Don't worry too much about exact dimensions; the editor can scale it, if required. If you have a problem with this, please email [bill.crofts@btinternet.com](mailto:bill.crofts@btinternet.com). If you create the ad on something other than Word, it is advisable to save the file as an image (jpeg, png etc.) which is easier for the editor to deal with.
- Email your ad to the Treasurer at [bill.crofts@btinternet.com](mailto:bill.crofts@btinternet.com), stating the size of ad that you would like and which editions you would like it to feature in.
- Deadline for entries is the 18<sup>th</sup> of the month prior to publication, i.e. 18<sup>th</sup> August for September's edition.
- Once received, you'll be invoiced according to your requirements and your ad will be placed with the editor(s) for your chosen editions.
- All advertisements are accepted at the editor's discretion, subject to S&A News policy. Editors reserve the right to edit all contributions.



# Stoneleigh Community Orchard CIC Update



**Pete Freeman**

Those members of the Stoneleigh community who ventured out for a New Year walk through the orchard may well have observed small clusters of fresh cut branches lying next to the lines of trees. This is a part of the process of pruning which traditionally takes place throughout the winter season. The idea is to thin out the tree in order to prevent disease by allowing the air to circulate through the structure of the tree. Branches that are in contact with each other or that show a likelihood to grow inwards and so come into contact with surrounding branches are also cut out. Many orchard owners try to foster a perfect tree structure which resembles a “goblet” shape. In Stoneleigh Orchard this was only possible on a limited number of trees located immediately adjacent to the river as the other stock were grown as twin grafts. I consider these to be the equivalent of “Frankenstein trees” as they are effectively created involving a grafted amalgamation of three different varieties of tree selected for rapid root and trunk growth and then finally the fruit variety required. This was all the work of renowned Somerset plantsman “John Dennis” from whom the shrubs were purchased back in 2011.

This year pruning assumed an amusing twist as I was joined by a small resident family of swans who, encouraged by a regular feed, waited each day throughout early January for me to commence work and then proceeded to follow me from tree to tree as I went about my work.





It was good to see how work undertaken by Orchard members, immediately prior to the Covid pandemic, to remove barbed wire from the river bank, had encouraged the swans to enter the Orchard. Although, as I was acutely aware that these animals are now experiencing a pandemic (Avian flu) of their own, I was cautious in their presence. I couldn't fail to be struck by how magnificent these birds were particularly when observed close up. Sadly, I am informed that these swans took to the air and moved on after a dog, which was let off the leash and out of control, ran the length of the meadow to attack them. Let us hope that they make a speedy return and do not succumb to illness.

As mentioned in the Christmas edition there was no Twelfth Night Wassail this year as members of the board have opted to concentrate on the King's Coronation event this year. The March edition will contain a piece developed by fellow villager Tom Marshall who will give us an update on the wild tree planting on Motslow Hill.

Orchard Friends' subscriptions and yearly renewals cost £10 and can be made to Pete Freeman, as Chairman, or to Richard Hancox, as Treasurer.

Cheques should be made payable to Stoneleigh Village Community Orchard.

However, why not become a long term Friend and set up a direct debit?



Pete Freeman (Chairman),  
5 Church Lane, Stoneleigh  
[Petefreeman773@gmail.com](mailto:Petefreeman773@gmail.com)  
Richard Hancox (Treasurer),  
[Richard.Hancox@highwaysengland.co.uk](mailto:Richard.Hancox@highwaysengland.co.uk)

# Do you know a someone that needs....

- A Mental Capacity Assessment
- A Testamentary Capacity Assessment
- A Certificate Provider
- An Independent Welfare Review
- Advocacy and Support
- Funeral Plans

for further information

**Appoint Us**  
SERVICES (MIDLANDS) CIC

024 7699 8414

[www.appointusservices.co.uk](http://www.appointusservices.co.uk)



Do you provide creative arts? (Music, arts, percussion etc)

"Can you keep an eye on my relative when I'm away or at work?"

"Can you speak up for me?"

Can you provide services to get me discharged from hospital safely and quickly?

"Can you help me with my benefits?"

Can you ensure my relative gets a hot meal?

Do you provide advocacy?

I'm lonely, can you help?

Can you provide reliable honest staff, can I trust you?

Do you offer support with wills, power of attorney, MCA's etc?

Can you give me/my family peace of mind?

"Can you help me with a funeral plan?"

"Can you provide therapy using animals?"

Can you take me to an appointment?

Will you help me attend community events?

Can you meet all of my support needs?

Can I have a regular team?

**YES OF COURSE!**

Can I just use your service once?



**Appoint Us**  
SERVICES (MIDLANDS) CIC



For further information  
024 7699 8414

[www.appointuservices.co.uk](http://www.appointuservices.co.uk)

find us on facebook - Appoint Us Services



## **A “Thank You” from Myton Hospice**

I am most grateful for the many donations from friends and neighbours who gave so generously towards my “Christmas Card Flag Flying Activity”, which enabled me to send a substantial donation to the Myton Hospices.

I have received the following message from Louise Careless, the Community Fundraiser at Myton:

Hi Robin,

It was lovely to speak to you today, I wanted to write to express my personal thanks to you for the generous donation of £577.00, which was raised from your Christmas flag flying fundraiser.

It's hard to put into words just how grateful we are for your support, especially in these challenging times. At Myton, we believe that everyone matters for every single moment of their life. We focus on enhancing someone's life when a cure is no longer an option. Perhaps most importantly we give people more quality time with their loved ones. We have to raise £9.1 million of the £11.6 million we need this year to provide our services free of charge and we really couldn't continue without help from the local community, so your support is invaluable to us and very much appreciated.

Thank you again, on behalf of our patients, their families and everyone at Myton.

Best wishes,  
Lou.

I had been thinking that, after nearly 40 years, it was perhaps time to give up the charity Christmas flag flying. However, after such an appreciative response from Myton, I may have second thoughts!

Thank you  
Robin Bussell

## Stoneleigh Male Voice Choir.



Although it seems ages since Christmas my report mainly concerns the Choir's events for last December which was a busy month.

On December 7<sup>th</sup> we held our annual Carol Concert in the Old Riding Stables at Stoneleigh Abbey which was attended by 160 people and the collection at the concert raised £541 for the Good Neighbours Charity based in Coventry and Bedworth. It was a fun evening enjoyed by all who came.

On December 17<sup>th</sup> some members sang at Carols in the Castle organized by Kenilworth Lions which took place at Kenilworth Castle before an audience of over a thousand. Our two songs - A Gentleman's Christmas and The Twelve Days of Christmas brought a smile to people's faces. The Twelve Days of Christmas when the cards were held high by members of the audience was rewarded with a rousing cheer at the end.

The Choir rounded off 2022, by singing at The Stoneleigh Church Carol Service. It was a wonderfully uplifting service.

We are now busy rehearsing for our next concert which will take place on March 24<sup>th</sup> at Ashow Church on Friday, March 24<sup>th</sup> at 7pm. Further details are to be found elsewhere in the magazine.

If anyone is interested in joining the Male Voice Choir, please contact me on 01926 853511 or 07910 240453 or come along to Stoneleigh Village Hall on a Wednesday evening at 7.30pm where we will be delighted to see you.

I would like to take this opportunity to wish you all a belated Happy New Year!

Best wishes

Philip Jones

## ORGANIST FOR ASHOW CHURCH

Ashow Church is looking for an organist to play the regular Sunday services. Most of these are weekly services at 9.30 am.

The organ at the church is a small Bryceson Chamber organ, five stops, no pedals. The player would need to be at Associated Board piano grade 5+ level and interested in mostly traditional church music.

Perhaps this would appeal to a music student or a mature person prepared to work with other people.

Fees apply and back up support is available.

Please apply in the first instance to the administrator for the parishes of the United Benefice of Stoneleigh and Ashow: -

Jackie Cubitt:- Telephone 02476415506

Email: - [admin@stoneleighchurch.co.uk](mailto:admin@stoneleighchurch.co.uk).





## **Ashow Church News**

**A belated Happy New Year to you all.**

**Ashow PCC would like to thank everyone who helped to make our services over the Christmas period so memorable.**

**It seems a long time ago now but on Sunday November 27<sup>th</sup> we celebrated the beginning of Advent with a candlelit Advent Carol Service followed by mince pies and mulled wine courtesy of Jean and Peter Shrimpton in the Village Club.**

**The Christmas Carol Service took place on Sunday, December 18<sup>th</sup>. Both these services were well attended and we were delighted to have the Ashow Church Choir lead the singing. At the Christmas Carol Service we were joined by the bell ringers from Leek Wootton. Both the choir and the bell ringers greatly enriched the service.**

**We are very grateful to Susan Spencer who organised both services and conducted the choir and bell ringers.**

**A very big thank you to everyone who helped to decorate the church for Christmas and to the Stoneleigh Estate who donated the tree.**



**On Friday, March 24<sup>th</sup> at 7pm there will be a fundraising concert by the Stoneleigh Male Voice Choir. This will be our first concert in Ashow Church since before lockdown. We hope that as many of you as possible will be able to join us on this joyous occasion. For more information please see the advert in the magazine.**

**Kate Jones**

# PARISH COUNCIL NOTES

## Meetings

The next meeting will be on Thursday 9th February 2023, to be held at Ashow Village Club at 7pm.

To view the full details of this, and other meetings, including upcoming planning applications, please visit the Parish Council website at:

[www.stoneleighashowparishcouncil.co.uk](http://www.stoneleighashowparishcouncil.co.uk).

Unfortunately, the Police and Crime Commissioner was not able to attend our December meeting. There was lengthy discussion on the proposed Farmers Market Roundabout, which councillors are keen to see progress.

In December we held our first Neighbourhood Plan Advisory Committee meeting. The committee will help shape the vision statement for the Neighbourhood Plan, identify the stakeholders for the Parish and plan an open event to launch the plan.

We have already secured our first allocation of funding to enable the plan to develop further. If you would like to be involved please contact the clerk on [stoneleighashowparishcouncil@gmail.com](mailto:stoneleighashowparishcouncil@gmail.com) or speak with one of your councillors, their contact details can be found on the website.

In our January meeting, the main focus of discussion was on planning application W/22/1875/TC - the erection of a 30m telecommunications tower in a field off B4115, Stoneleigh Abbey. Members of the public and councillors had strong objections to the application and felt that the application was misleading and inaccurate.

The Parish Council also reviewed the budget for 2023/24 and councillors agreed a precept of £18,932.



Warwick District Council and Stratford-on-Avon District Council have embarked on a South Warwickshire Local Plan. Once adopted the plan will set out how both Councils ensure delivery of the infrastructure, open spaces, employment sites and homes meet our needs up to 2050. The plan will be the basis upon which all planning applications will be determined. The next phase of the plan is the ‘issues and options’ consultation which runs from 9th January – 6th March 2023 and focuses on the options for how and where any new development takes place. To have your say or to find out more, please visit [www.southwarwickshire.org.uk/swlp](http://www.southwarwickshire.org.uk/swlp). You can also call 01926 456525 or email [swlp@warwickdc.gov.uk](mailto:swlp@warwickdc.gov.uk) for further information.

Becky Maoudis, Parish Clerk  
[stoneleighshowparishcouncil@gmail.com](mailto:stoneleighshowparishcouncil@gmail.com)  
 PO Box 6890, Coventry, CV6 9QU

**Seniors Helping Seniors®**  
 ...A WAY TO GIVE AND TO RECEIVE®

**5 Star Customer Rating**

**Award winning home care services for seniors, by seniors.**  
 Non-medical eldercare for those that need a little help, provided by active, life-experienced people that want to help.  
 This is home care: A Different Way!

Companionship . Meal Preparation . Shopping  
 Transportation . Medical Appointments  
 Hospital Discharge . Respite Care . Dementia Care  
 Overnights . Housekeeping . Light DIY . Gardening  
 Pet Care . Tech Help ...and much more!

We provide services across the Solihull & Warwick region, including the surrounding villages. Our same-person care is tailored to you. To find out more about receiving care or working with us, please call or email at

01564 335875 | 01926 354688  
[info@seniorshelpingseniors.co.uk](mailto:info@seniorshelpingseniors.co.uk)  
[www.seniorshelpingseniors.co.uk](http://www.seniorshelpingseniors.co.uk)

Living Wage Approved

Facebook icon

## **Teams4U Stretton Shoebox Appeal Review of 2022**

**We are very proud to report that we dispatched 2691 shoe boxes from Stretton in 2022!**

The year was certainly easier than in pandemic times, but not without its challenges!! With work and leisure activities back in full swing, we were very lucky that people have still found some time to support the appeal. We kept working parties to small numbers to keep everyone comfortable and safe; and faced challenges such as financial pressures, increased transport costs and believe it or not - pencil shortages!

The support received was most welcome and we continued to take delivery of pre-loved toys & new essentials, gained many beautifully crafted items, saw some sterling work on collecting boxes from local shoe shops and were amazed at how many boxes some people were able to wrap for us!! We also had some fantastic fund raisers organising and are grateful to those who attended - which all helped towards covering the transport costs for the boxes!

Our boxes started their 1,400-mile journey from Stretton in mid-November, venturing off to vulnerable children and families in Arad & Oradea, Western Romania and some were indeed destined for camps near the Ukraine/Romanian border.

### **Our thanks for this year go to:**

#### **The villagers of:**

Ladbroke  
Marton  
Stretton-on-Dunsmore  
Stoneleigh

#### **Businesses:**

Brookside Stores, Stretton  
Charles Clinkard, Warwick  
Charles Ager Ltd, Coventry  
Country Style, Stretton

#### **Schools:**

Our Lady's Roman Catholic Primary School  
Princethorpe College



## **Groups:**

Knowle WI  
Radford Semele WI  
Southam WI  
Stoneleigh WI  
Wolston WI  
Stoneleigh Ladies Choir  
Birdingbury Ladies  
Eastern Green Ladies  
Harbury Knitwits  
Meriden Ladies  
Ryton Evergreens  
Stoneleigh Card and Quilling Group  
Stretton Ladies' Fellowship



## **Church Groups:**

Our Lady of the Sacred Heart Church, Bulkington  
St Anne's Church, Wappenbury  
St Francis Church, Bedworth  
St John's Church, Long Lawford  
St John's Mothers Union, Kenilworth  
St Mary the Virgin, Stoneleigh

## **Sports Clubs:**

Kenilworth Golf Club  
Kenilworth Tennis, Squash & Croquet Club  
Leamington Hastings Tennis Club  
Napton Tennis Club  
Ullesthorpe Golf Club Senior Ladies

.....And many, many individuals beyond Coventry & Warwickshire!!!

Using the donations received, we pack the first half of our boxes in early summer, send them off to the T4U warehouse and repeat the whole process again in October. Please consider that we need just as many new/old/crafted items by the end of May, as we do by the end of September to make this possible. Behind the scenes a lot of time is spent preparing - filling pencil cases, wrapping soap, counting combs, making notepads, pairing socks, folding colouring sheets - amongst lots of other jobs, to make sure the packing days run smoothly. There are always tasks to do if you're interested in helping out!

Thank you to all who contributed - it meant a child received a box this Christmas!

Contact: Pam - 07526 337437                      Joanna - 07906 398752

Facebook @strettonshoeboxappeal    E: [strettonshoeboxappeal@gmail.com](mailto:strettonshoeboxappeal@gmail.com)

W: [teams4u.com](http://teams4u.com)



The United Benefice of  
The Assumption of our Lady, Ashow  
and  
St Mary the Virgin, Stoneleigh



***SERVICES FOR FEBRUARY 2023***

Sunday 5 <sup>th</sup>	10.00 am United Holy Communion Service at Ashow
Sunday 12 <sup>th</sup>	9.30 am Holy Communion Service at Ashow 11.00 am Morning Praise Service at Stoneleigh
Sunday 19 <sup>th</sup>	9.30 am Celtic Service at Ashow 11.00 am Celtic Holy Communion Service at Stoneleigh
Wednesday 22 <sup>nd</sup>	<b>Ash Wednesday</b> 7.00 pm Holy Communion Service at Stoneleigh
Sunday 26 <sup>th</sup>	9.30 am Village Service at Ashow 11.00 am Holy Communion Service at Stoneleigh

***From the Registers***

***Funerals***

Monday 19<sup>th</sup> December 2022 – Sheila Rench - Funeral service at Stoneleigh followed by cremation at Oakley Wood

Wednesday 21<sup>st</sup> December 2022 - Valerie Cordwell - Funeral service and burial at Stoneleigh Church

Monday 16<sup>th</sup> January 2023 – Sheila Rench – Interment of ashes at Stoneleigh Church

**Contacts:**

***Priest in Charge:*** Reverend Petrica Bistran 07572193260  
email: [revpbistran@gmail.com](mailto:revpbistran@gmail.com)

***Churchwardens:***

**Ashow:** Kate Jones 01926 853511 and Anne Gregory 01926 717084  
Deputy Warden: Peter Shrimpton 02475 096477

**Stoneleigh:** Gordon Gatward 07776 211276  
Deputy Wardens: Richard Ashley 07708 097187 and  
Ashley Toogood 07771 888618

Or please contact the Parish Administrator,

Jackie Cubitt, 02476 415506 email: [admin@stoneleighchurch.co.uk](mailto:admin@stoneleighchurch.co.uk)

*Office Hours Wednesday 9.00 am to 12.00, Thursdays 9.00 am to 1.00 pm*

**Website:** [www.achurchnearyou.com/church/12964](http://www.achurchnearyou.com/church/12964) for Stoneleigh  
[www.achurchnearyou.com/church/12954](http://www.achurchnearyou.com/church/12954) for Ashow